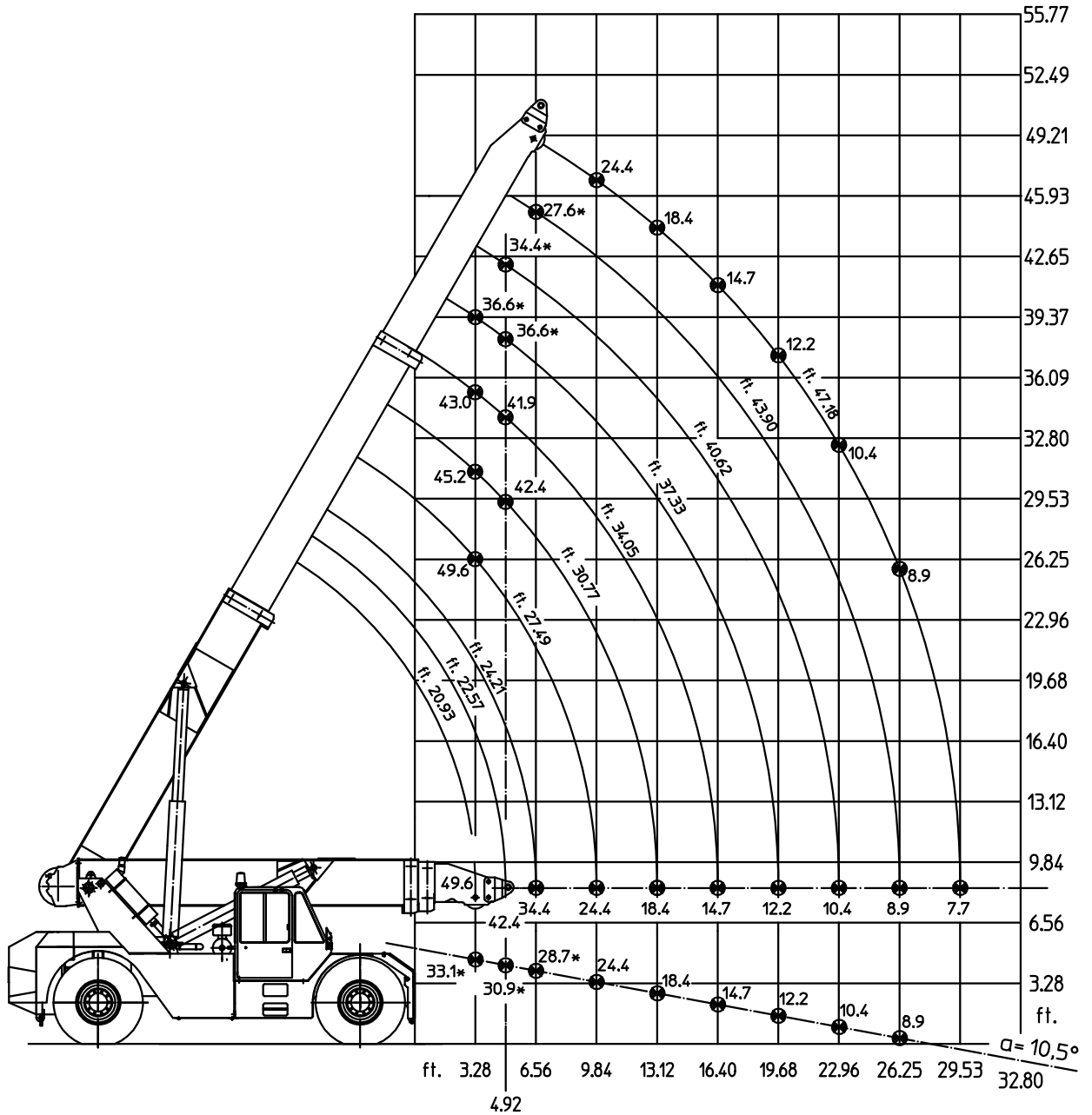


HOISTING CAPACITIES - STANDARD + AUXILIARY + EXTRA COUNTERWEIGHT

CAPACITIES (sh tn)	ROPES NUMBER
49.6 - 43.8	10
43.8 - 32.8	8
32.8 - 21.8	6
21.8	4



(*) Capacities determined by factors other than overturn